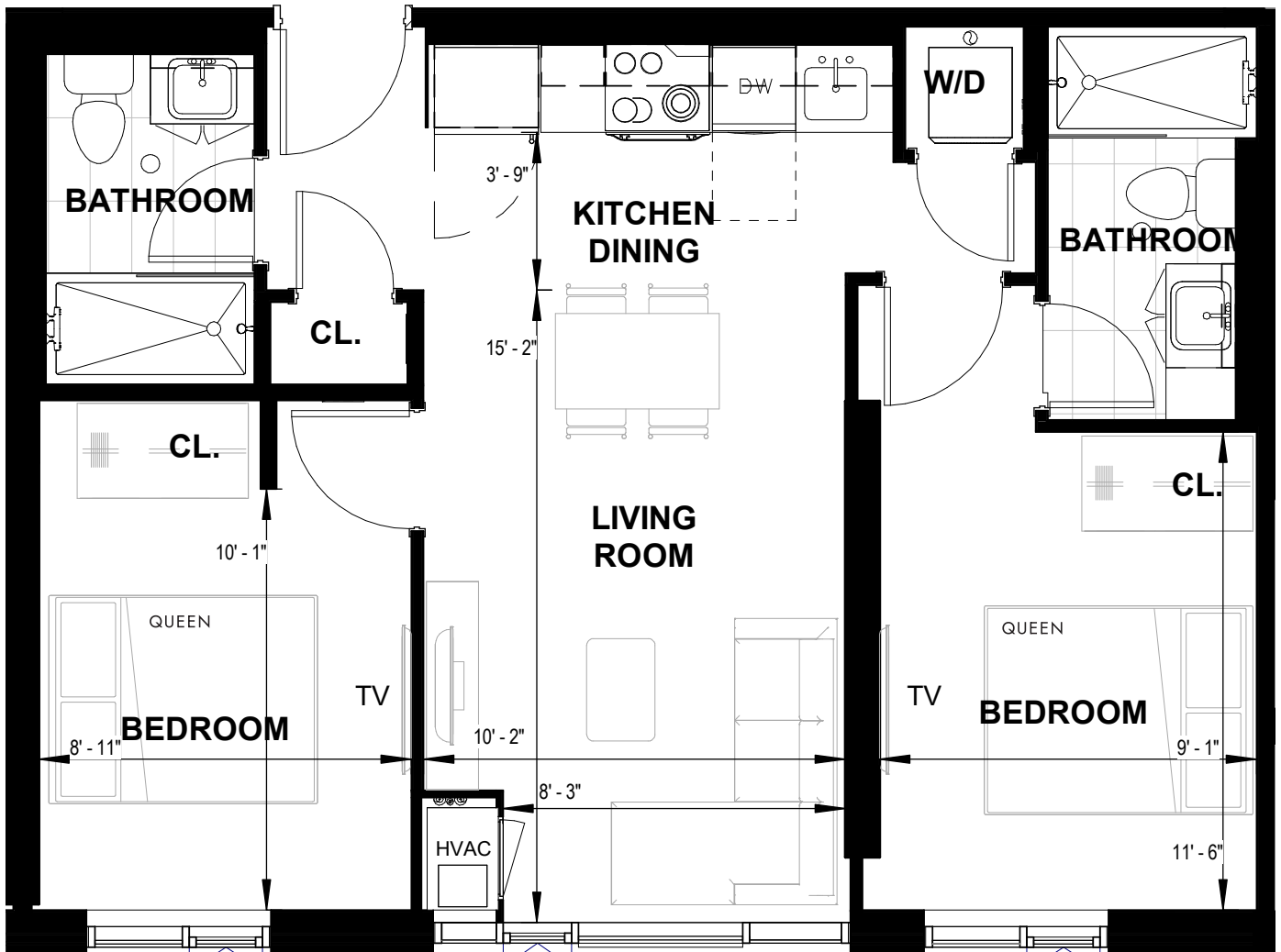
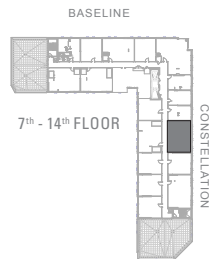
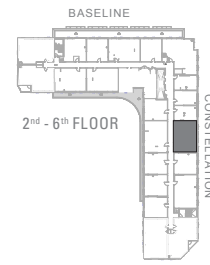


GEMINI TOWER

CENTREPOINTE

G FOURTEEN
 (214-1414)
 680 SQ FT
 2 BDRM + 2 BATH

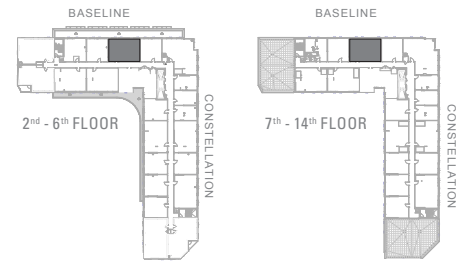


Dimensions, specifications, layouts and materials are approximate only and are subject to change without notice. Window sizes and locations may vary. Actual usable floor space within the unit may be different from stated floor areas or dimensions on this plan. Suite, balcony and terrace area calculated by the building architects. E&O.E. July 2024

GEMINI TOWER

CENTREPOINTE

G EIGHT
 (208-1408)
 680 SQ FT
 + 64 SQ FT BALCONY*
 2 BDRM + 2 BATH



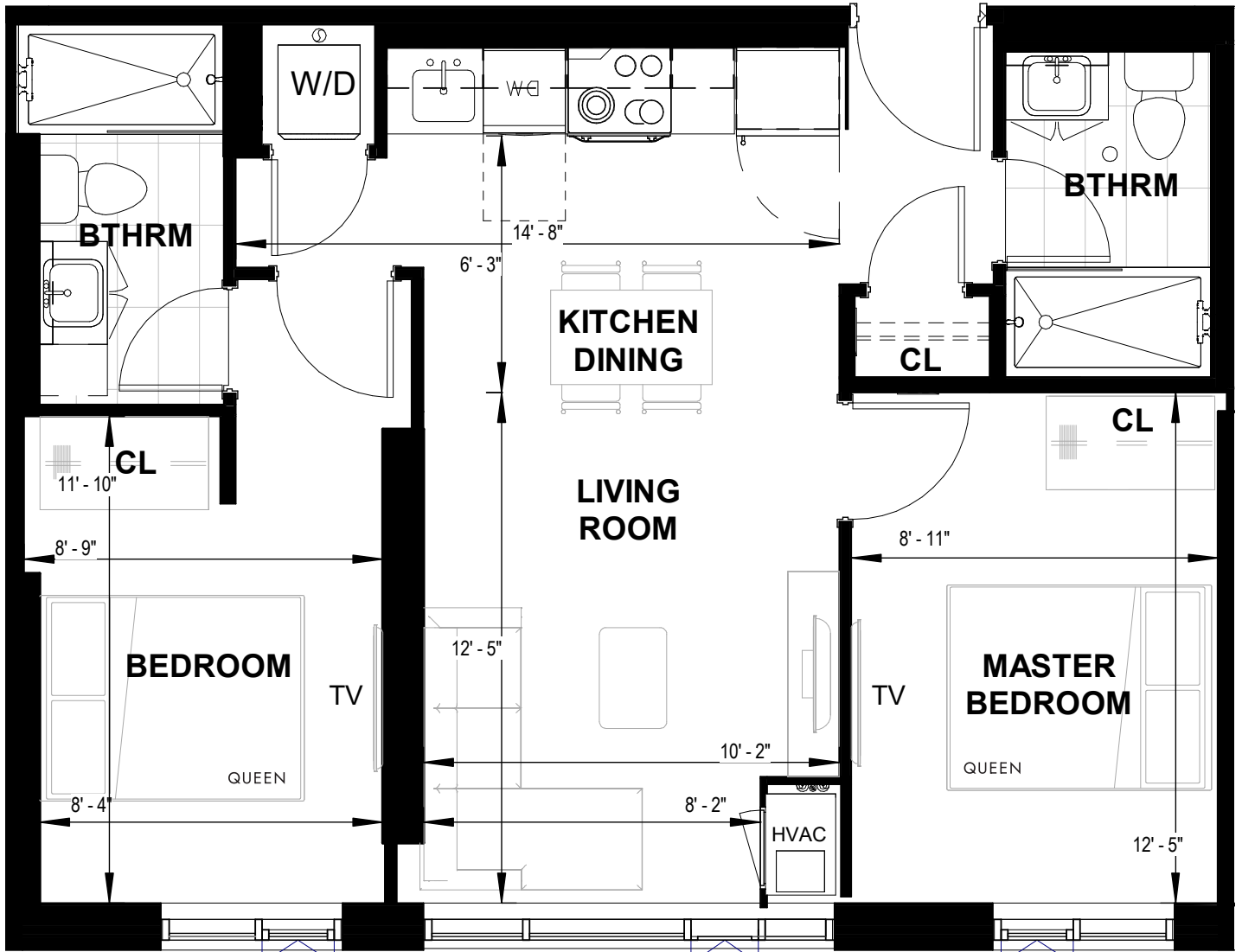
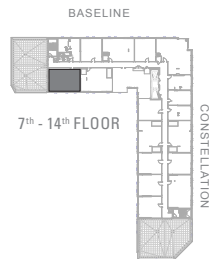
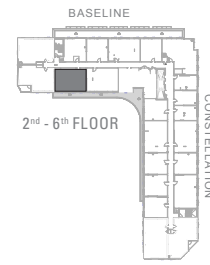
ATREIDES CAPITAL DEVELOPMENTS

Dimensions, specifications, layouts and materials are approximate only and are subject to change without notice. Window sizes and locations may vary. Actual usable floor space within the unit may be different from stated floor areas or dimensions on this plan. Suite, balcony and terrace area calculated by the building architects. E&O.E. July 2024

GEMINI TOWER

CENTREPOINT

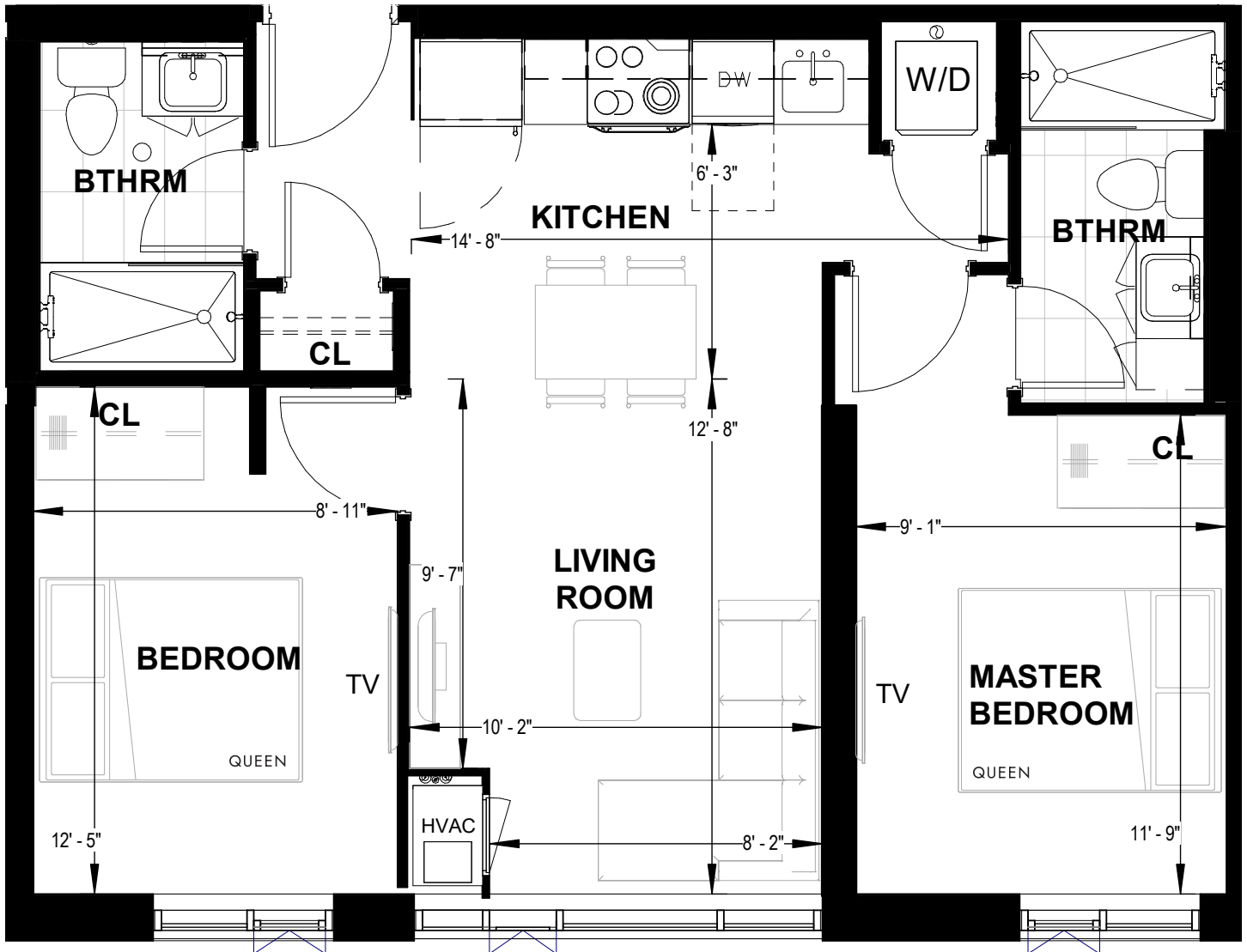
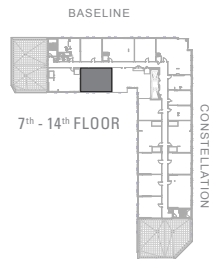
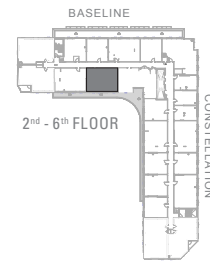
G THREE
 (203-1403)
 684 SQ FT
 2 BDRM + 2 BATH



GEMINI TOWER

CENTREPOINTE

G TWO
 (202-1402)
 686 SQ FT
 2 BDRM + 2 BATH

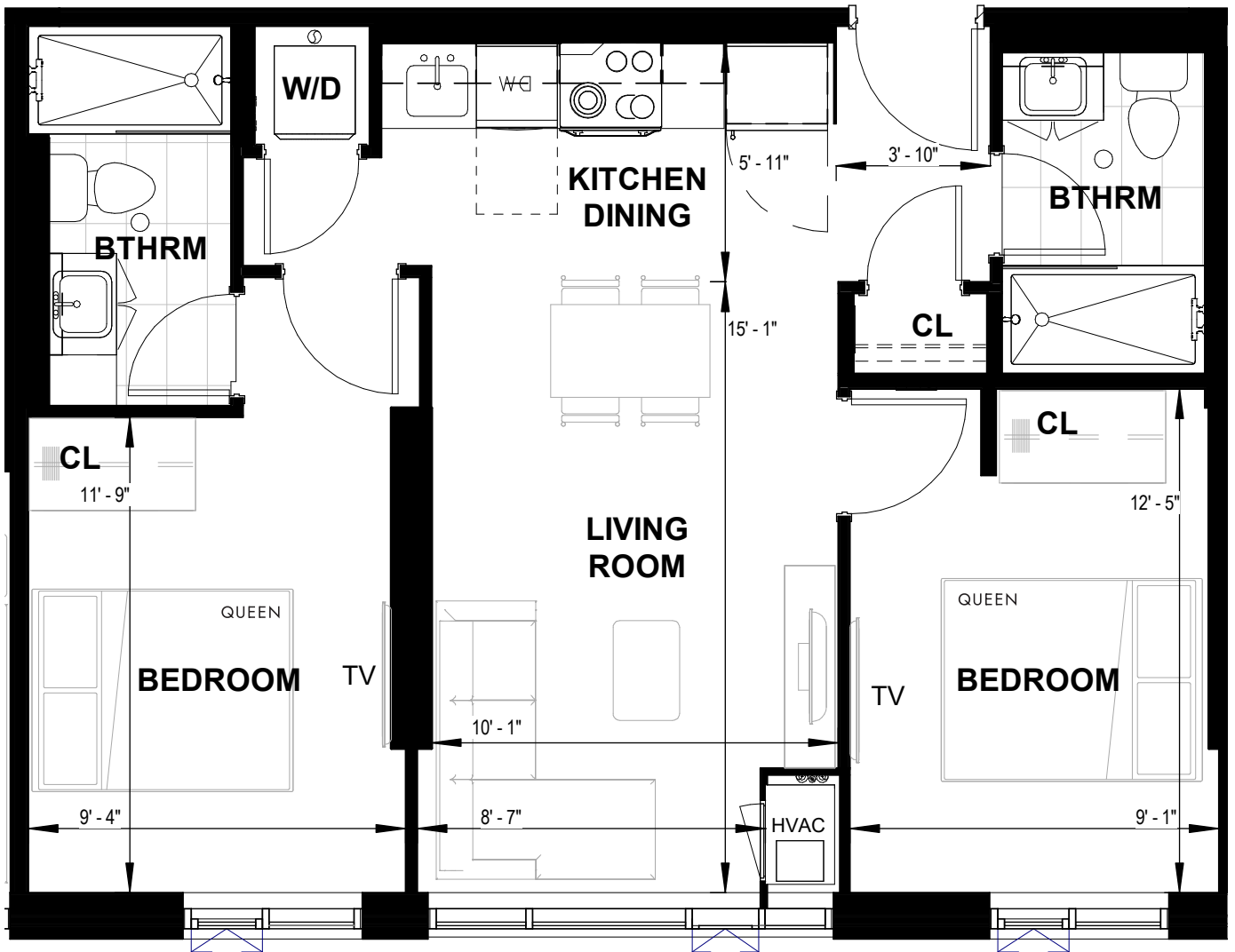
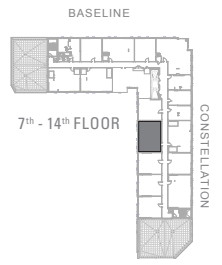
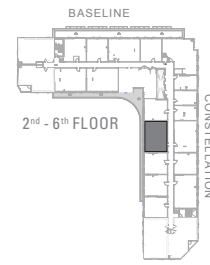


Dimensions, specifications, layouts and materials are approximate only and are subject to change without notice. Window sizes and locations may vary. Actual usable floor space within the unit may be different from stated floor areas or dimensions on this plan. Suite, balcony and terrace area calculated by the building architects. E&O.E. July 2024

GEMINI TOWER

CENTREPOINTE

G TWENTY-TWO
 (222-1422)
 686 SQ FT
 2 BDRM + 2 BATH

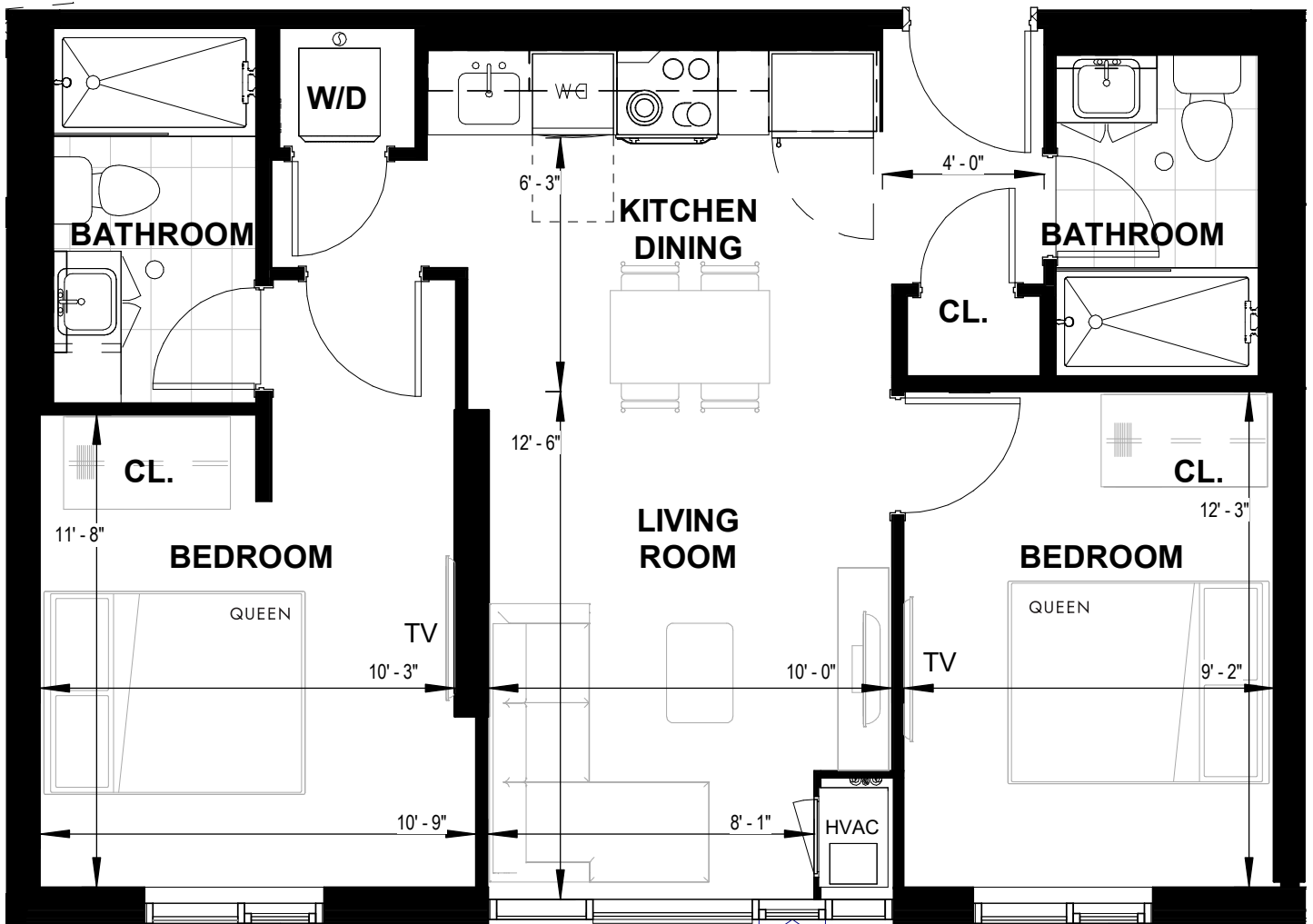
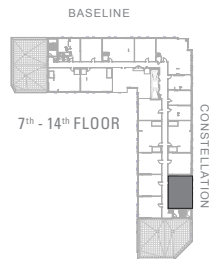
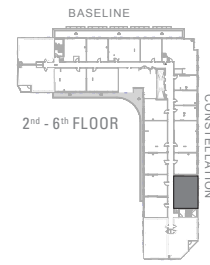


Dimensions, specifications, layouts and materials are approximate only and are subject to change without notice. Window sizes and locations may vary. Actual usable floor space within the unit may be different from stated floor areas or dimensions on this plan. Suite, balcony and terrace area calculated by the building architects. E&O.E. July 2024

GEMINI TOWER

CENTREPOINTE

G SIXTEEN
 (216-1416)
 728 SQ FT
 2 BDRM + 2 BATH

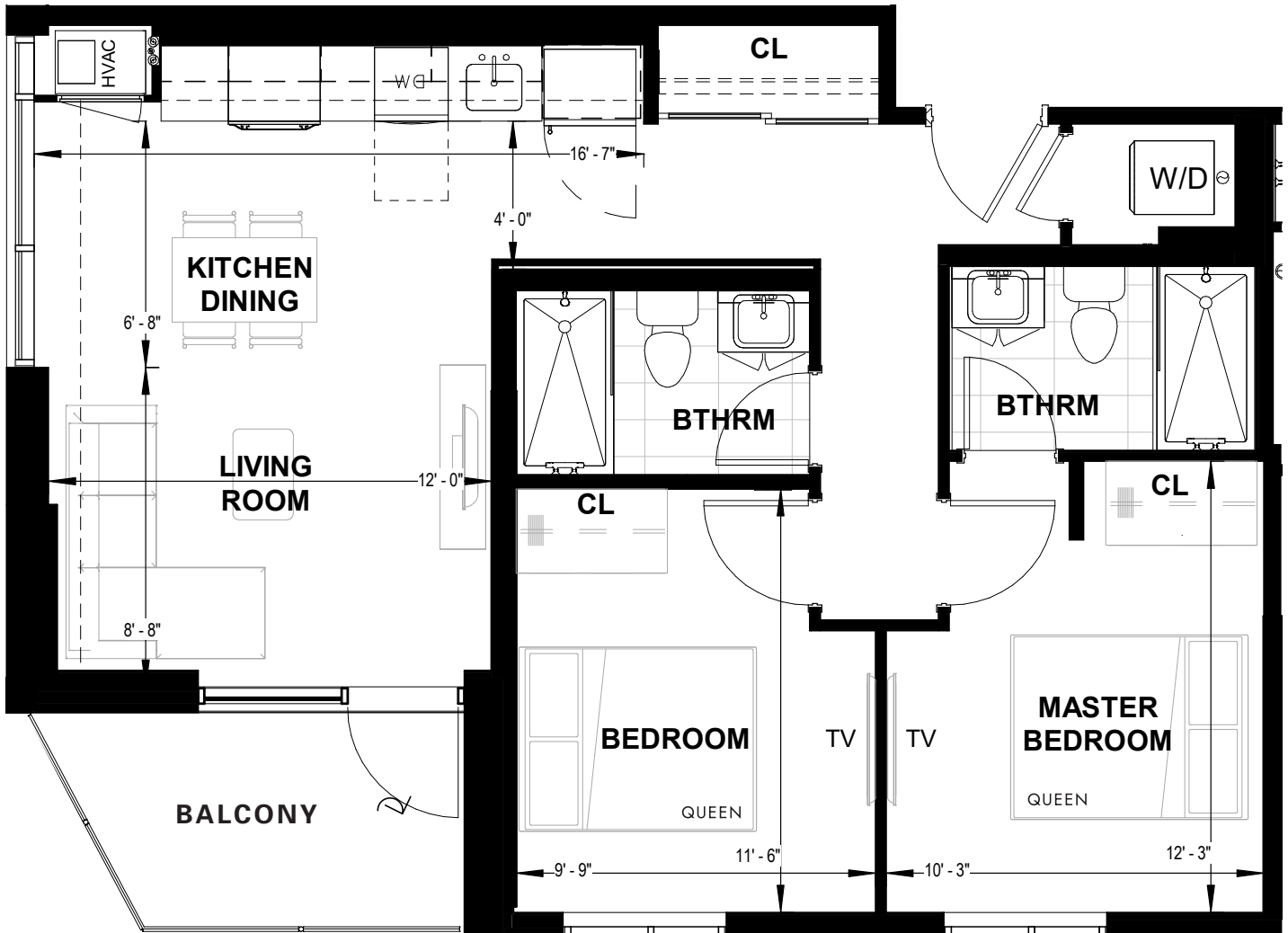
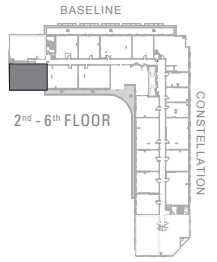


Dimensions, specifications, layouts and materials are approximate only and are subject to change without notice. Window sizes and locations may vary. Actual usable floor space within the unit may be different from stated floor areas or dimensions on this plan. Suite, balcony and terrace area calculated by the building architects. E&O.E. July 2024

GEMINI TOWER

CENTREPOINTE

G FOUR
 (204-604)
 771 SQ FT
 + 61 SQ FT BALCONY
 2 BDRM

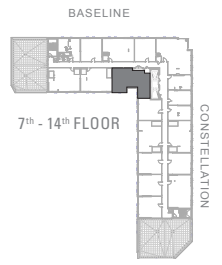
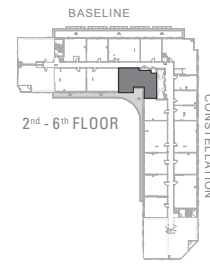


Dimensions, specifications, layouts and materials are approximate only and are subject to change without notice. Window sizes and locations may vary. Actual usable floor space within the unit may be different from stated floor areas or dimensions on this plan. Suite, balcony and terrace area calculated by the building architects. E&O.E. July 2024

GEMINI TOWER

CENTREPOINTE

G ONE
 (201-1401)
 784 SQ FT
 2 BDRM + 2 BATH

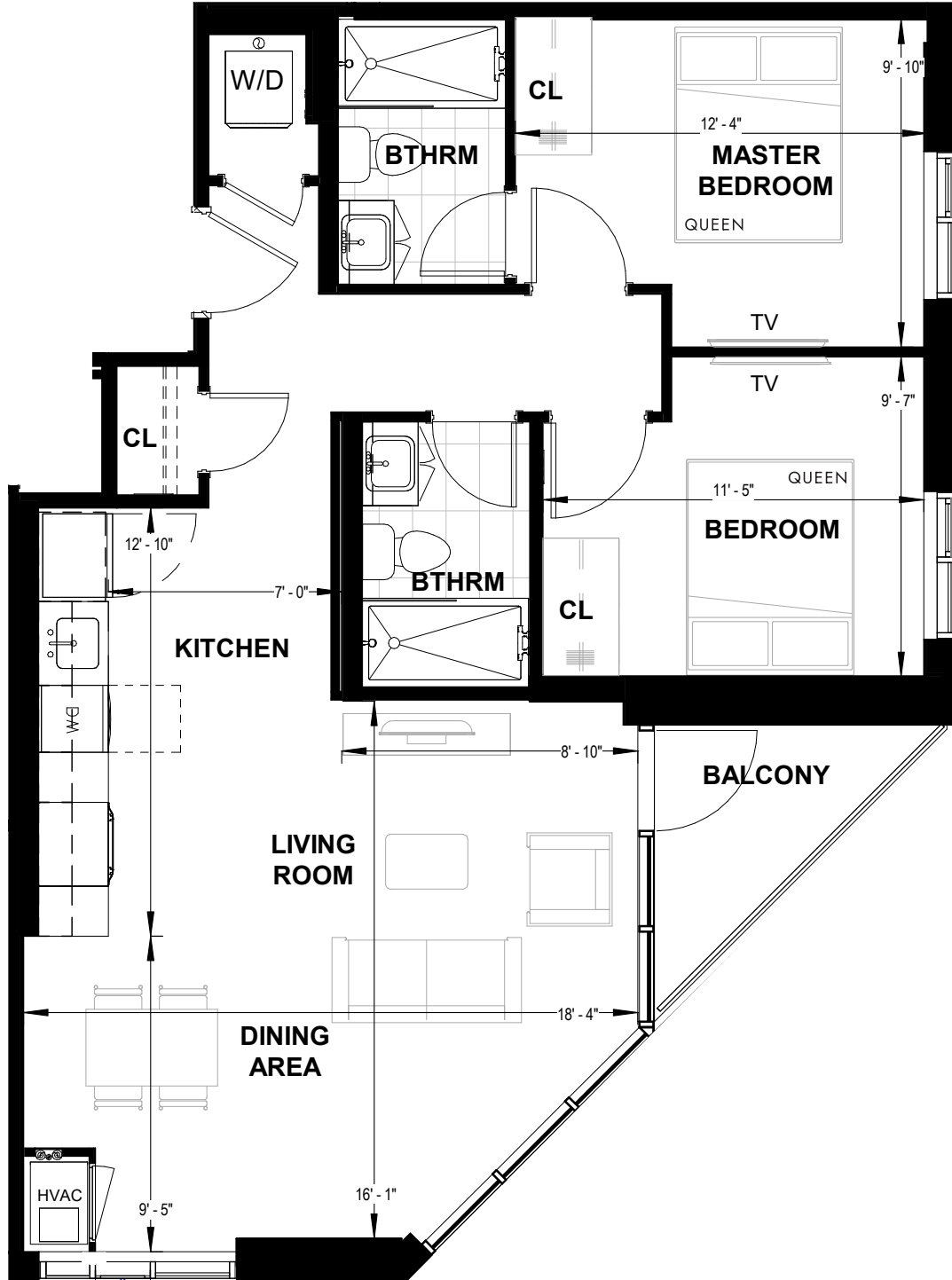
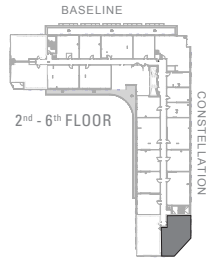


Dimensions, specifications, layouts and materials are approximate only and are subject to change without notice. Window sizes and locations may vary. Actual usable floor space within the unit may be different from stated floor areas or dimensions on this plan. Suite, balcony and terrace area calculated by the building architects. E&O.E. July 2024

GEMINI TOWER

CENTREPOINTE

G SEVENTEEN
 (217-617)
 843 SQ FT
 + 42 SQ FT BALCONY
 2 BDRM + 2 BATH

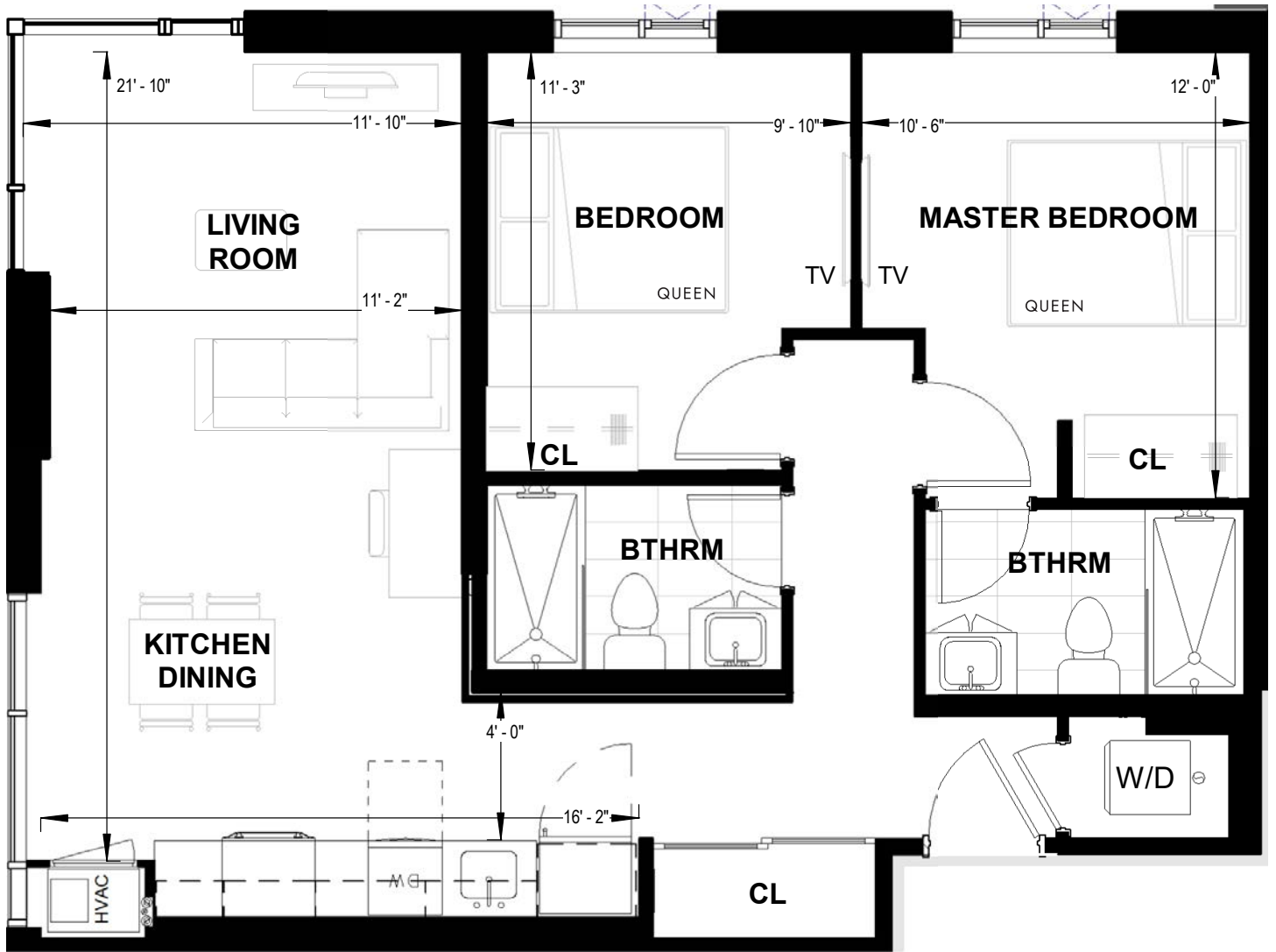
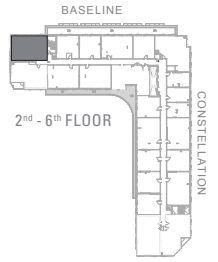


Dimensions, specifications, layouts and materials are approximate only and are subject to change without notice. Window sizes and locations may vary. Actual usable floor space within the unit may be different from stated floor areas or dimensions on this plan. Suite, balcony and terrace area calculated by the building architects. E&O.E. July 2024

GEMINI TOWER

CENTREPOINTE

G FIVE
 (205-605)
 851 SQ FT
 2 BDRM + 2 BATH

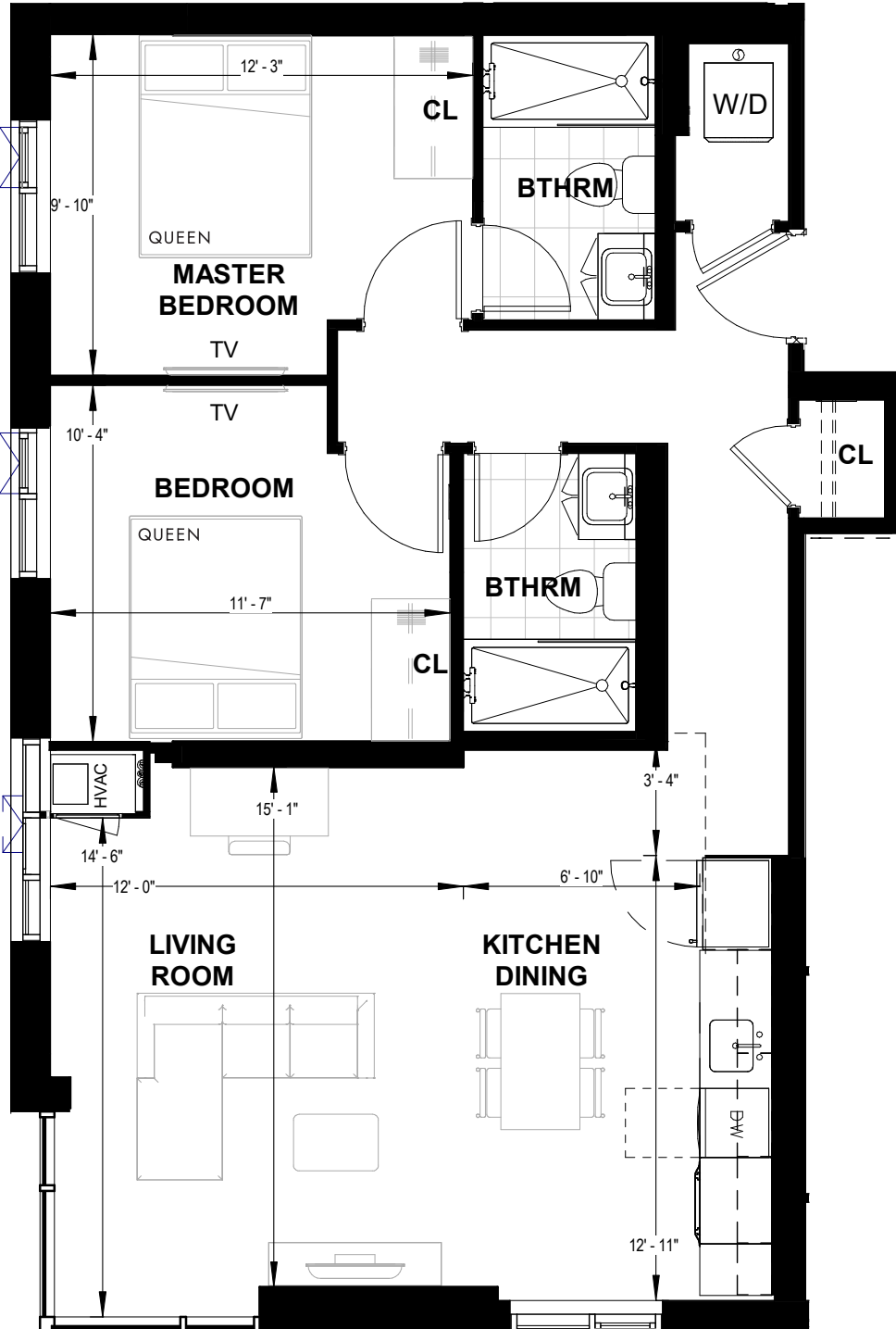
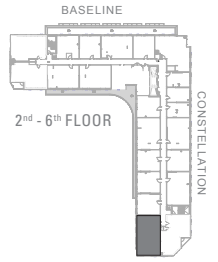


Dimensions, specifications, layouts and materials are approximate only and are subject to change without notice. Window sizes and locations may vary. Actual usable floor space within the unit may be different from stated floor areas or dimensions on this plan. Suite, balcony and terrace area calculated by the building architects. E&O.E. July 2024

GEMINI TOWER

CENTREPOINTE

G EIGHTEEN
 (218-618)
 887 SQ FT
 2 BDRM + 2 BATH



Dimensions, specifications, layouts and materials are approximate only and are subject to change without notice. Window sizes and locations may vary. Actual usable floor space within the unit may be different from stated floor areas or dimensions on this plan. Suite, balcony and terrace area calculated by the building architects. E&O.E. July 2024